

Repeatable Pattern

Location - Barrow Factory

Pack Quantities :-

S - 104 No. 100x133mm

M - 156 No. 133x133mm

L - 156 No. 200x133mm

Total Pack Area - 8.32 sq m

Repeatable pattern on right

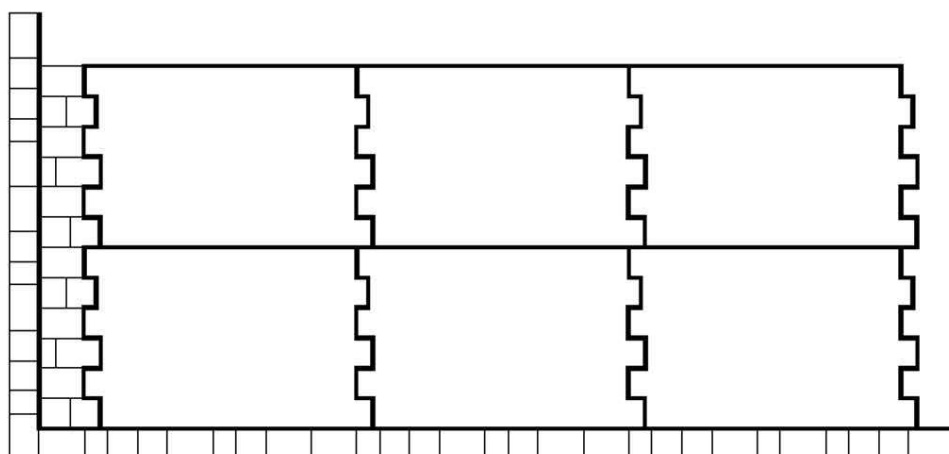
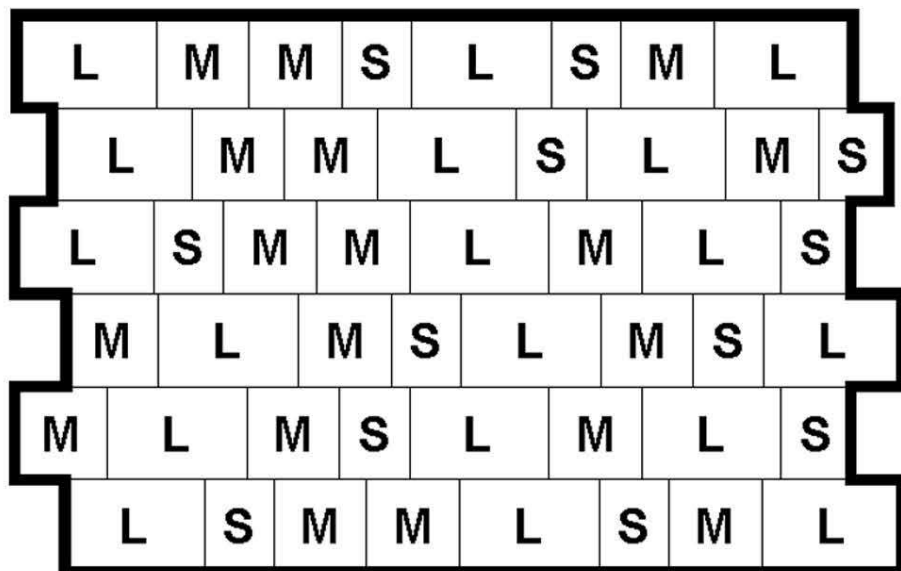
Quantities per sq.m :-

S - 13 No. 100x133mm

M - 19 No. 133x133mm

L - 19 No. 200x133mm

All dimensions are approximate.



Pattern to the left shows how the above pattern repeats, it also shows how to square off the pattern using standard sizes.

Other Regatta products available include: -

- Regatta DUO
- 2.95m diameter Circle
- Drivestyle Kerbs
- High Kerbs

All block statistics per sq.m. could potentially be rounded up to the nearest whole unit. When multiplied over a large area to get an overall volume it can result in a small excess being incurred. Generally for CBP quantities an extra of approx. 10% is suggested to account for natural wastage and cutting. Brett Landscaping cannot be held responsible for any excess or shortfall of units resulting from these statistics.

Repeatable Patterns

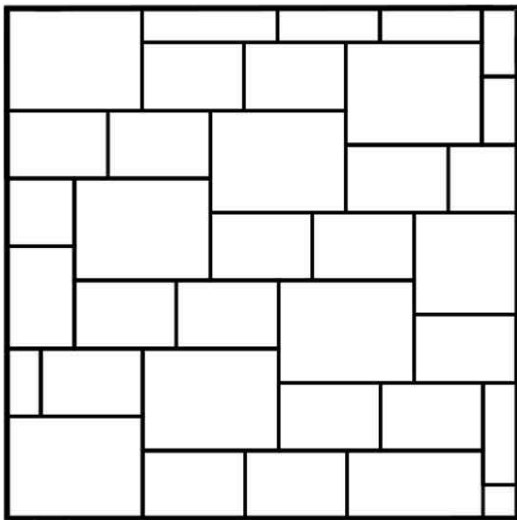
Pack Quantities :-

L - 160 No. 200x133mm

J - 80 No. 266x200mm

Total Pack Area - 8.51 sq m

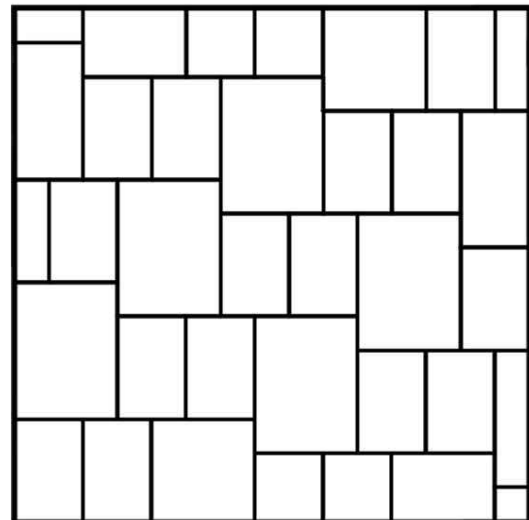
All dimensions are approximate.



Pattern RD 1

18 Large 200x133 per sq.m.

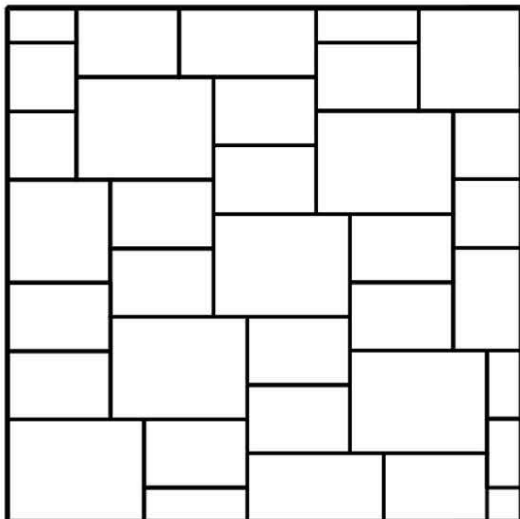
9 Jumper 266x200 per sq.m.



Pattern RD 2

18 Large 200x133 per sq.m.

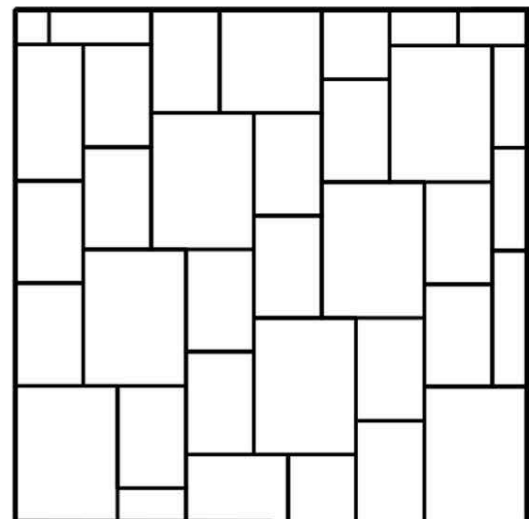
9 Jumper 266x200 per sq.m.



Pattern RD 3

18 Large 200x133 per sq.m.

9 Jumper 266x200 per sq.m.



Pattern RD 4

18 Large 200x133 per sq.m.

9 Jumper 266x200 per sq.m.

1 pack of TRIO with 1 pack of DUO

repeatable pattern

Location - Barrow Factory

TRIO Pack Quantities :-

S - 104 No. 100x133mm

M - 156 No. 133x133mm

L - 156 No. 200x133mm

DUO Pack Quantities :-

L - 160 No 200x133mm

J - 80 No 266x200mm

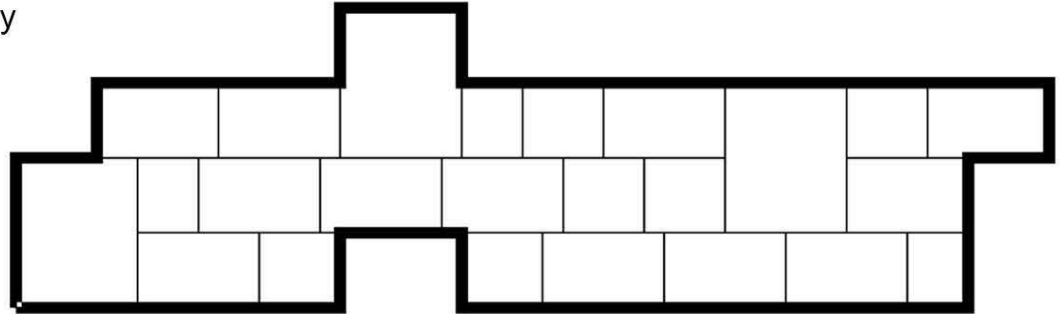
Total Pack Quantities :-

S - 104 No 100x133mm

M - 156 No 133x133mm

L - 316 No 200x133mm

J - 80 No 266x200 mm



Using 1 pack of TRIO and 1 pack of DUO you will achieve 26 repeats of the above covering 16.25 sq m. you will have 26 Small, 4 Large and 2 Jumper blocks remaining for cuts.

Repeatable pattern on right

Quantities per repeat :-

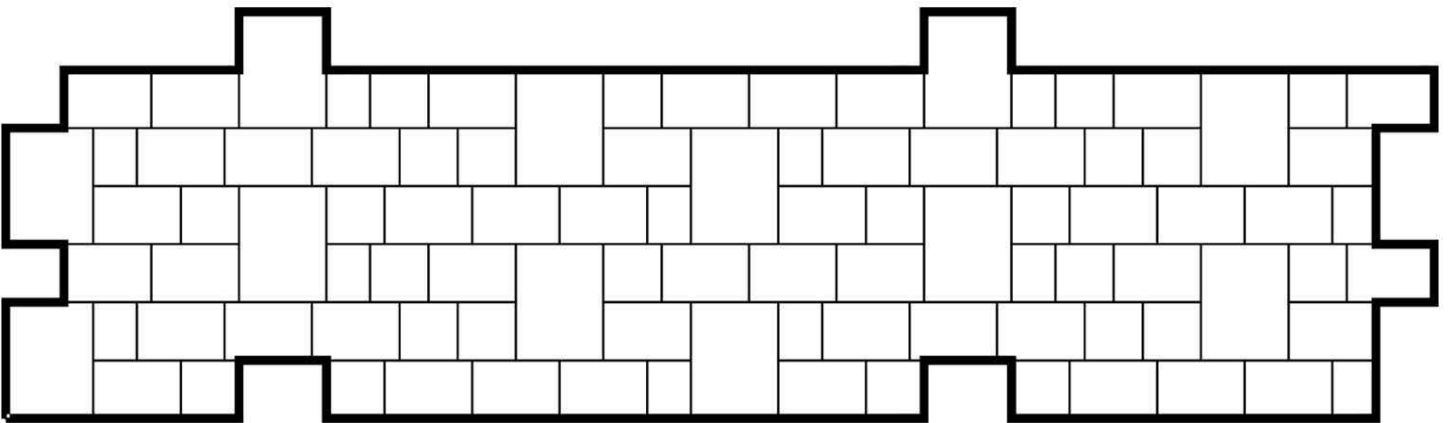
S - 3 No. 100x133mm

M - 6 No. 133x133mm

L - 12 No 200x133mm

J - 3 No. 266x200mm

All dimensions are approximate.



Pattern above shows how pattern is repeated.

All block statistics per sq.m. could potentially be rounded up to the nearest whole unit. When multiplied over a large area to get an overall volume it can result in a small excess being incurred. Generally for CBP quantities an extra of approx. 10% is suggested to account for natural wastage and cutting. Brett Landscaping cannot be held responsible for any excess or shortfall of units resulting from these statistics.